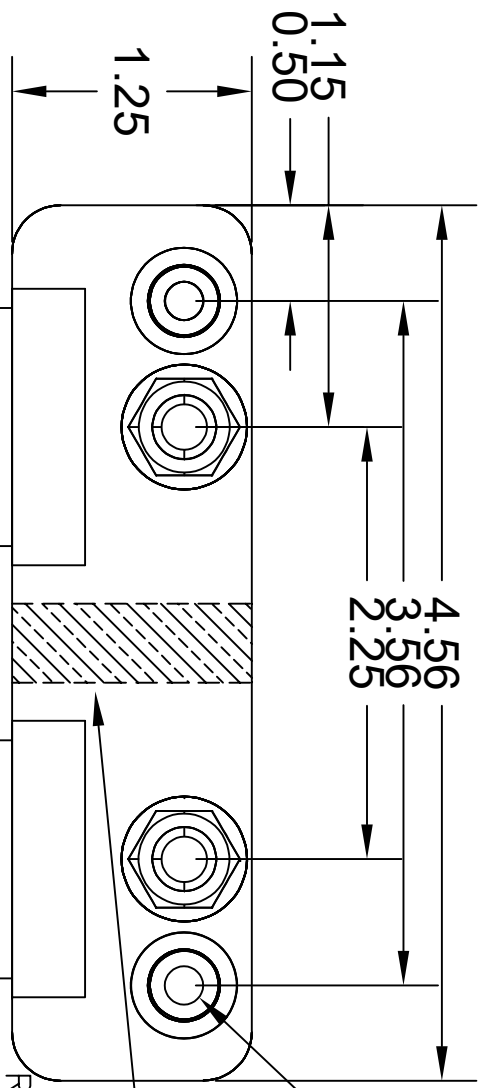
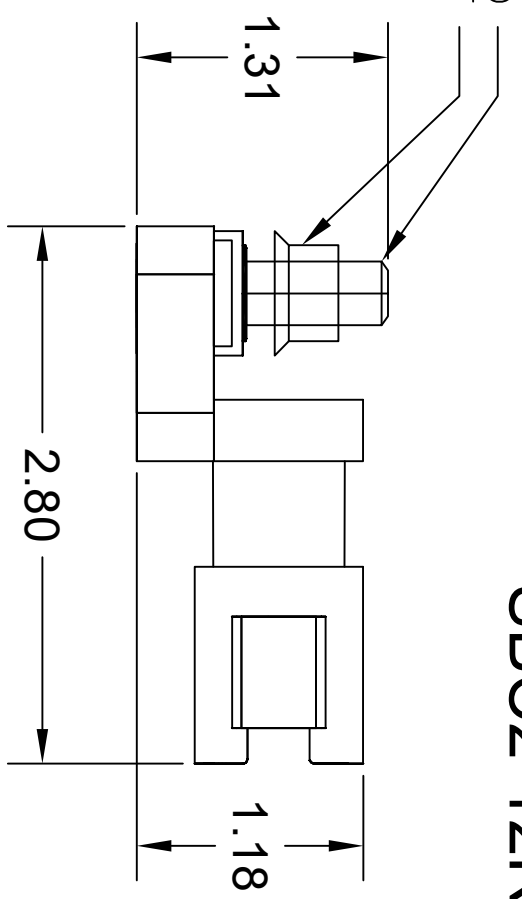


REVISIONS	DATE
DESCRIPTION Release	21 Mar 2022

5/16-18 x 1" SS STUD
5/16-18 SERATED FLANGE NUT

SBC2-12R



BLACK CONNECTOR
"B" KEY

GRAY CONNECTOR
"A" KEY

MOUNTING HOLE FOR #10 PAN HEAD
INTERNALLY ISOLATED

RATINGS: 150A @ 48V DC PER HALF
13A PER CONTACT

STUD: 2 @ 5/16-18 STAINLESS STEEL
CONNECTOR: SEALED TO IP67
IGNITION PROTECTED: SAE J1171
DEUTSCH MATING CONNECTOR 1: DT06-12SA
DEUTSCH MATING CONNECTOR 2: DT06-12SB
AMPHENOL MATING CONNECTOR 1: AT06-12SA
AMPHENOL MATING CONNECTOR 2: AT06-12SB
MOLEX MATING CONNECTOR 1: 93445-6212
MOLEX MATING CONNECTOR 2: 93445-6221
MATERIAL: C1100 ELECTROLYTIC COPPER
BASE: RETPU - INJECTION MOLDED - RED



WWW.SEALEDBUSBAR.COM
The best protection for your electrical connections

THIS DRAWING IS THE PROPERTY OF SORENSON LIGHTED CONTROLS, INC. A FLORIDA CORPORATION. ALL RIGHTS RESERVED. THIS DRAWING AND INFORMATION CONTAINED HEREIN MAY NOT BE COPIED OR DISCLOSED TO OTHERS WITHOUT THE WRITTEN PERMISSION OF SORENSON LIGHTED CONTROLS, INC.